



Whirlpool®

WSGS4530T

30-INCH GAS SMART RANGE WITH AIR COOKING TECHNOLOGY AND STEAM CLEAN



Dimensions: h: 36.6" w: 29.9" d: 25.4"

Colors:  Black  Stainless Steel  Black-on-Stainless

 White  Fingerprint Resistant Stainless Steel

START THE CONVERSATION

Do you love using your countertop air fryer but sometimes wish you could cook larger batches or bigger meals without having to do multiple rounds?

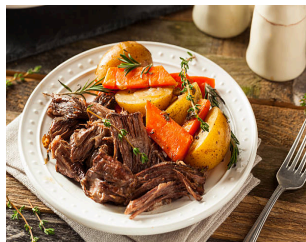
TOP FEATURES



1

AIR COOKING TECHNOLOGY

Experience the difference with the dynamic air flow and intense heat of Air Fry and Air Baking



2

10 COOKING MODES

Take your favorite meals from fresh, fridge or freezer to fabulous with Cooking Modes. Including the Air Cooking Technology of No Preheat Air Fry, Air Baking, Air Roast, Air Broil and Air Reheat, or use traditional modes like Bake, Slow Cook, Broil, and Keep Warm.



3

EDGE-TO-EDGE GRATES

Enjoy plenty of space to sauté, boil and simmer with Edge-to-Edge Cast-Iron Grates and the flexibility of a cooktop with a range of burner sizes and power levels.

DID YOU KNOW?

The benefits of replacing a countertop air fryer with solutions like a range, can help customers that want to to save counter space, simplify clean up and/or get the same results in a full-size oven.

HOW TO DEMONSTRATE



AIR COOKING TECHNOLOGY

Create a visual comparison between a standard countertop air fryer basket and the spacious oven cavity. (Optional: include the Whirlpool air fry basket as an accessory display.) Highlight how the oven's Air Cooking Technology allows for significantly more food to be cooked at once—an ideal solution for larger or busy families who need to get meals on the table fast.

ADDITIONAL PRODUCTS TO CONSIDER

Be sure to tune into your customers' shopping priorities to bundle products across categories



ALSO AVAILABLE / STEP UP
[WSGS5030S](#)



SUITE MATCH REFRIGERATOR
[WRFF3536S](#)



SUITE MATCH DISHWASHER
[WDP540HAM](#)